



# MAGNUM 5000

Prep Station and Limited Finishing Work Station



**FINISHING SOLUTIONS FOR EVERY SHOP**

SAIMA of North America Inc. | Randolph, New Jersey 07869 | 800.524.0340  
info@accudraftpaintbooths.com | www.accudraftpaintbooths.com

# 5000

Prep Station | Limited Finishing Work Station



## Reduce Cycle Time, Increase Profits...

The MAGNUM 5000 is the ultimate in prep and finishing speed. Airflow and workspace conditions are engineered and optimized for prep, sanding, priming and painting all in one place.

Reduce cycle time and increase profits by eliminating the need to move from a prep area to a spray booth. With the addition of a heated air mechanical group, the MAGNUM 5000 can Flash, Bake, and Cool down just like a high performance paint booth.

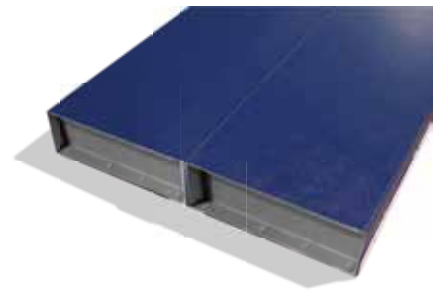
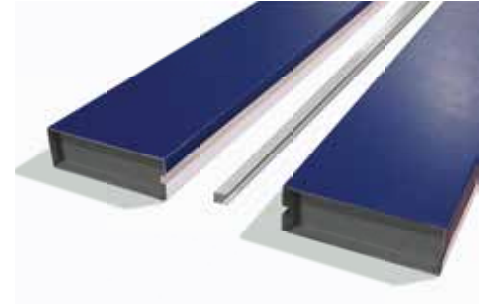
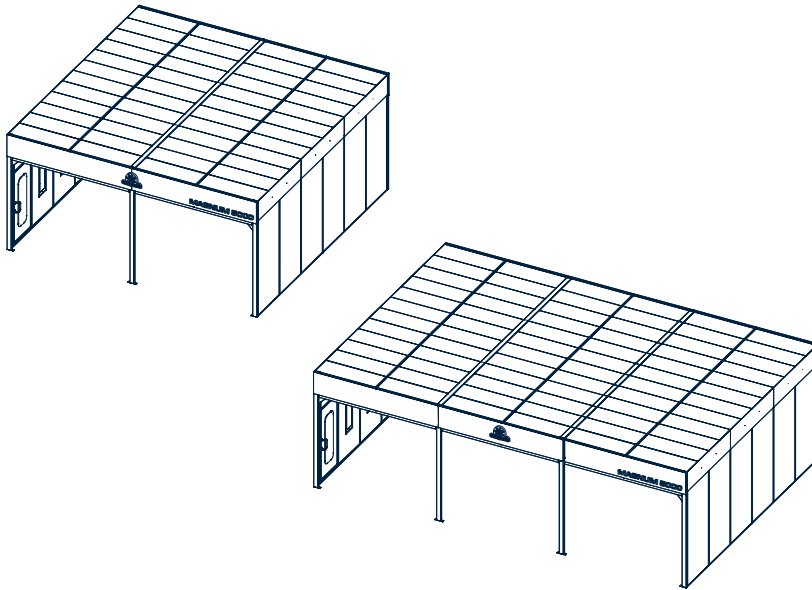


**SAIMA**

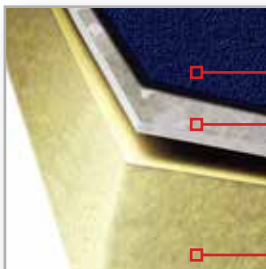
Since 1977

## Insulated Simple Joint Construction

Interlocking Panel System



The Magnum 5000's H-channel construction provides up to four times the seal integrity of ordinary butt-jointed or bolt-together wall panels. Galvanized steel and industrial PVC coatings provide the highest grade of durability and outdoor weather resistance available. Internal V-Channels also produce a neat & clean finish free of bolts or screws.



Textured  
Vinyl Exterior  
Galvanized Steel

Non-flammable  
Insulation



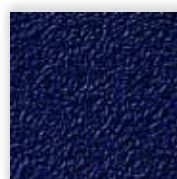
Ultra - White  
Non-Reflective  
Vinyl Interior

## Industrial Vinyl Coating

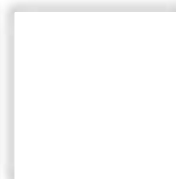
Interior & Exterior

- Galvanized Steel
- Chemically Bonded PVC Coating (Interior & Exterior)
- Manufactured & Shipped with Protective Polyethylene Coating
- 24 Inch Interlocking Male & Female Panels
- Insulated Dual Skin Construction
- Non-flammable Insulation

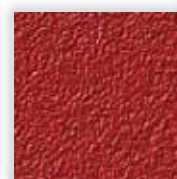
Available Exterior Colors:



Accudraft Blu™



Ultra White™



Furia™



Grigio™

## Workspace Lighting

Daylight Corrected Illumination

- Color Correct LED lighting
- Shadowless Lighting Design
- 45° Inclined Upper Light Banks
- 48" Vertical Wall Lights (recessed)
- (23) Four-tube Light Fixtures Total\*

\*At standard sizes



Work with shadow free  
daylight corrected light



(16) 45° Upper  
Lights (Standard)

(10) Recessed  
Vertical Wall Lights



Lab certified explosion proof light fixtures protect against potentially explosive materials. Inside accessibility allows easy tube changes from inside the workspace. If a light door is open, the light fixture will automatically shut off the user's spray gun to prevent any potentially hazardous fumes from being introduced while the fixture is being serviced. Inside accessibility also allows for more installation flexibility. The system can be installed in a shop corner or up against existing structures since space is no longer needed to access the outside of the light fixture.

## MAGNA II

Explosion Proof Light Fixtures

- Vinyl Coated
- Hinged Inside-Access Glass Lenses
- LED Energy Efficient Bulbs Included
- Daylight Corrected for Superior Color Matching
- Lab Certified for Hazardous Locations (Class I : Div. II)
- ETL Listed

## Ceiling Filtration

- 5-Micron Downdraft Diffusion Ceiling
- Full Width Ceiling Filtration
- EZ-Clip Filter Change System



### EZ-Clips

Tools Free Ceiling Access

EZ-Clips allow for fast and tools-free ceiling filter changes. Changing ceiling filters can be completed in less than 30 minutes and can be performed by one person.

## Airflow Pattern

Full width ceiling filtration provides a proper downdraft envelope around the vehicle. Ceiling air reaches all areas of the workspace and flows toward the exhaust point underneath the vehicle. Walls and lights are kept clean by the wide downflow pattern and the extended pit design.



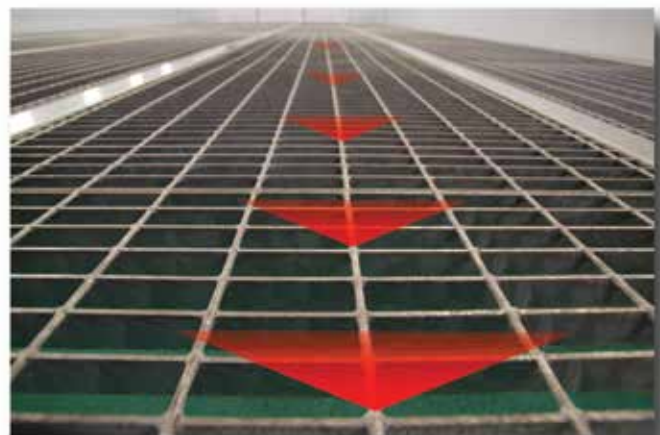
### Adjustable Vanes

Re-adjustable Microtag Winglets

EvenFlo™ downdraft balancing vanes allow the Titan to draft evenly across the entire exhaust pit or basement. No more uneven drafts or dead spots. Each vane is attached by flexible microtags that allow the user to adjust and readjust multiple times if changes are needed.

### Even Flo™

Downdraft Balancing System



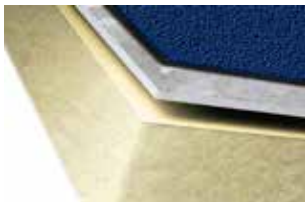


## Heavy Duty Curtains

Standard or High Speed Roll Up



Custom length high quality curtains help control dust, debris, and contaminants from escaping the work area and vice versa. Sections are easily moveable to allow vehicles and parts to enter and leave the work space.



**Insulated Dual Skin Construction**  
Galvanized steel with bonded PVC exterior and interior.



## 10,000 CFM

Per Work Bay

Backward inclined exhaust construction keeps the turbine blades clean and air flowing through dirty filters. Fans are non-sparking and certified for hazardous locations, while greasable pillow block bearing mounts ensure optimal efficiency for years to come. Larger sizes are available.

## EZ-Clip Ceiling Filters

No more time consuming filter changes. EZ clips & hinged filter frames make filter changes a quick and simple process.

## Superior Ceiling Filtration

5-Micron air quality. Perpendicular compression edges are built into each filter frame for a continuous seal around each filter.



Vertical Light Fixtures  
- (23) Fixtures  
- 48" Long  
- 4 tubes each  
- Inside access

ETL lab-certified explosion proof.



### EvenFlo™ Downdraft Balancing System

EvenFlo™ adjustable floor vanes allow the user to pinpoint areas of more or less air flow and adjust the strength of the draft until it's just right.



### VFD Package

Provides up to 50% in electrical energy savings.

## Heavy Duty Controls

Industrial Electromechanical Control Panel



## Optional Controls

SmartPad™ Control Panel

- Digital Control Panel
- Digital PLC Controller
- Dual Modes for Standard and Waterborne Paint
- Allows for EnergySmart™ System with STANDBY
- Xcelerator Operation Built in



Accudraft's heavy duty electromechanical control panel provides decades of daily use with rugged switches, pushbuttons and gauges. Locking electrical disconnects prevent any unauthorized access or tampering with vital components and timer settings.

## Optional Heat

KD-560/630R Integrated Mechanical Group

Operate the MAGNUM 5000 just like a high performance paint booth. Reduce cycle time by performing prep, sand, spray, flash, and bake all in one place. The KD-560/630R is an integrated intake with direct fire heat & up to 80% heat recycle in one compact unit. Provides up to 99% fuel efficiency. Includes SmartPad™ control panel (shown above).



## (2) 7.5 HP VFD

Variable Frequency Drive

With two 7.5 HP VFD's, the exhaust motors are gradually started in order to get the turbines spinning. This eliminates a spike in power and can save thousands in energy usage over the course of a year. Larger sizes are available.



## Downdraft

### Concrete Center Pit Design

The MAGNUM 5000 downdraft configuration includes reinforced steel grates that create a drivable surface that removes debris and overspray efficiently and keeps the workspace clean. Downdraft airflow is the best airflow pattern for dust and overspray removal and will produce the highest quality finish.



## Side Exhaust

### Above Ground Configuration

The Magnum 5000 can be installed in an above-ground configuration that incorporates side exhaust fans on both sides of the structure. This allows overspray and contaminants to be drawn away through the left wall on the left bay and the through the right wall on the right bay (available on 2 bay configuration only).

## Rear Exhaust

### Above Ground Configuration

The Mangum 5000 can also be installed above-ground with the mechanicals mounted to the rear of the structure, saving on the left and right and avoiding the need for concrete work. This setup is great for narrow shops where space on the sides is restricted or occupied by a work area.



## Industrial Curtain Walls



### Standard Curtains

Manually open and close off areas that are either vacant or in use.



### High Speed Rollups

For the high production shop. Open and close in seconds at the touch of a button for faster workflow and decreased cycle time.

## Front & Side-Loader Doors


The MAGNUM 5000 can be outfitted with front drive-in doors to turn it into two fully functional high performance spray booths with no limitations on spray quantities. Side-loading doors (right) allow the MAGNUM 5000 to be attached to a paint booth for a high-speed horizontally oriented production line.

Locking mechanisms are built into each door, ensuring a proper closure. Recessed handles and integrated door hardware provide a neat and clean appearance free of bolts & bars. Wire mesh reinforced glass provides added strength & durability on all observation windows including personnel access door, drive through doors, & optional 6-door side-entrance doors.



## Product Comparison Chart ▼

Prep & Limited Finishing Workstations

Features	3000	PREP 4000	MAGNUM 5000
Wall Type	N/A	Rear or Side Divider	Double Wall/H - Channel
Airflow CFM	10,000	10,000	20,000 - 40,000
Draft Pattern	Downdraft or Semi-Down	Downdraft or Semi-Down	Downdraft or Semi-Down
Standard Mechanicals	KD-500R	KD-500R	(2) KD-500R
Drive Type	Belt Drive	Belt Drive	Belt Drive
Exhaust HP	7.5 HP	7.5 HP	(2) 7.5 HP
Exhaust Recycle	0 - 100%	0 - 100%	0 - 100%
Optional Heat/Intake	N/A	KD-500/500R	KD-560/630R
Heating Power	N/A	1,200,000 Btu/hr	1,500,000 Btu/hr
Heat Recycle	N/A	0 - 90%	0 - 90%
Controls	N/A	SmartPad	SmartPad
Fixture Size / Tubes	48 Inch - 4 Tube	48 Inch - 4 Tube	36 Inch - 4 Tube
Lighting Power (W)	128 Watts / Fixture	128 Watts / Fixture	120 Watts / Fixture
Upper Angled Lighting	4*	8*	20*
Wall Lighting	N/A	N/A	10 Horizontal - Optional*
Ceiling Filter System	Full Width - 5 Micron	Full Width - 5 Micron	Full Width - 5 Micron
Ceiling Filter Access	EZ-Clip	EZ-Clip	EZ-Clip
Waterborne	Add Xcelerator	Add Xcelerator	Add Xcelerator
Exhaust VFD	Yes	Yes	Yes (2)
Starting Length (ft)	13	20	20
Starting Width (ft)	6	12	24
Starting Height (ft)	9	9	9
Exterior Vinyl Colors			

\* Quantity of light fixtures at starting length. Quantities may change if workspace length is extended or reduced.



## Worldwide Automotive Finishing Products



SAIMA of North America Inc. | Randolph, New Jersey 07869 | (800) 524-0340

[info@accudraftpaintbooths.com](mailto:info@accudraftpaintbooths.com) | [www.accudraftpaintbooths.com](http://www.accudraftpaintbooths.com)

**SAIMA** Of North America

Scan  
QR Code



© 2013 SAIMA of North America Inc. All rights reserved.  
® Accudraft is a registered trademark of SAIMA of North America.

The information contained herein is general in nature and is not intended as a guide to perform work/design of any kind.