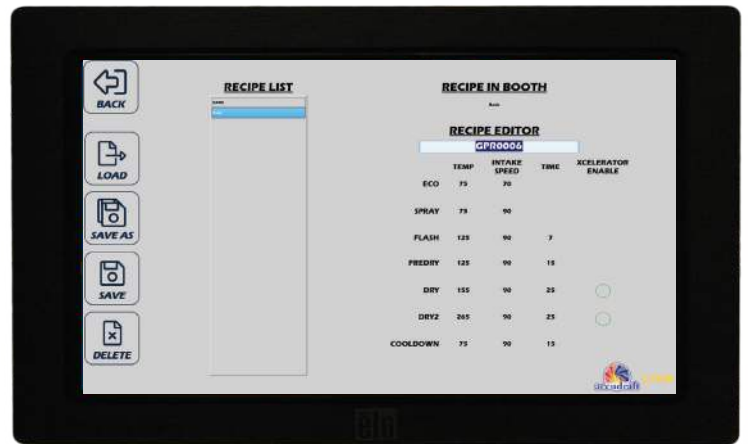


LIVE™ CONTROL PANEL

Experience unparalleled control and efficiency with the Accudraft LIVE control panel, a first-of-its-kind innovation in the industry. This cutting-edge system empowers you with **FIVE** fully independent programmable processes, putting unprecedented power at your fingertips. Monitor your operations remotely, track job costs in real-time, and optimize performance with integrated heating, cooling, and humidity control.

The LIVE Controller's intelligent design allows Accudraft to diagnose issues remotely and ensure prompt delivery of any necessary components, taking the frustration and worry out of maintenance. With LIVE, you can say goodbye to troubleshooting and hello to maximizing productivity.

This revolutionary system allows you to dedicate your energy to what matters most: producing flawless finishes in your paint booth.



accudraft LIVE™

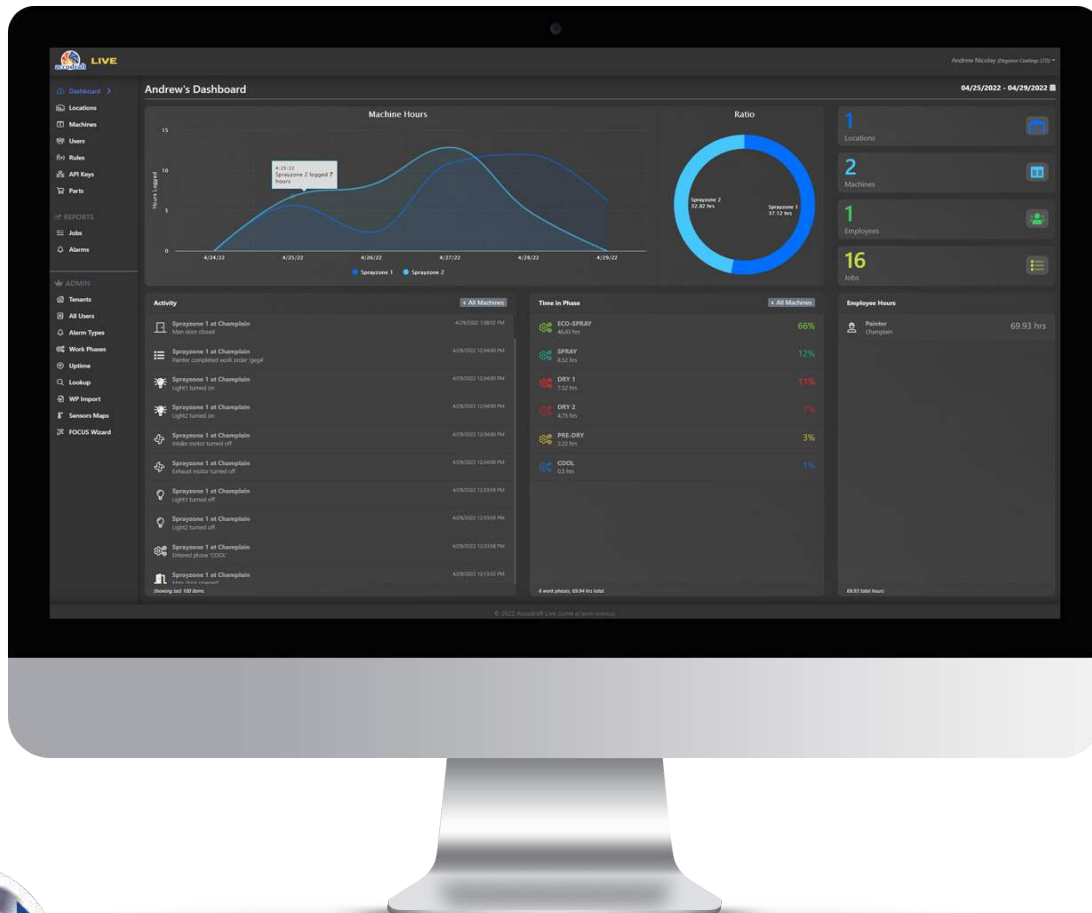
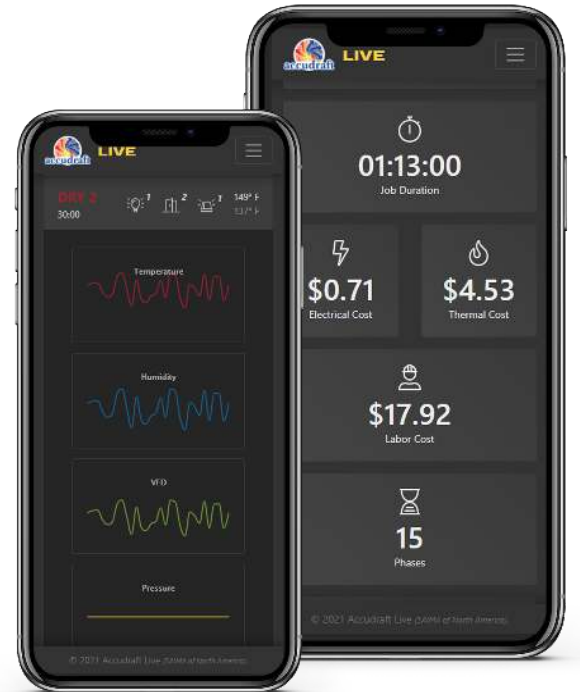
Accudraft LIVE puts the power of paint booth management in the palm of your hand. This mobile-friendly, cloud-based solution lets you monitor performance, track costs, and analyze key metrics from any location. Effortlessly check booth status, assess utility expenses per job, and access remote technical assistance with ease.

Compatible with both Android and iOS devices, LIVE empowers managers and service technicians to stay connected and in control.



A cloud solution for smarter finishing

- View the status of your finishing systems in real time
- Monitor job progress and energy costs
- Improve scheduling and work efficiency by monitoring cycle time
- Custom alerts and anomaly detection
- Mobile friendly - monitor equipment from anywhere, on any device
- Custom reporting for each level of user - keep track of what's important to you
- Secure authentication and authorization
- Integrates with other shop software
- Scales as your shop grows



What is Accudraft **LIVE**TM?

In today's competitive market, staying ahead is crucial. Accudraft **LIVE**TM gives your shop the edge by transforming your finishing systems into smart, connected powerhouses. With **LIVE**TM, you gain unparalleled visibility into your operations, empowering you to make data-driven decisions that improve efficiency, reduce costs, and enhance the quality of your work. It's the future of finishing, and it's here today. **LIVE**TM puts the power of information in everyone's hands. Managers can optimize workflows across locations and equipment, while painters receive personalized performance feedback, promoting collaboration and efficiency.

Learn More: accudraftpaintbooths.com/accudraft-live

Active environment monitoring

- Machine performance
- Employee performance
- Machine uptime
- Electric and thermal costing
- Rule based alerting

Scales as your company grows

- Multi-Location
- Multi-Machine
- Multi-Employee
- Assign users to specific locations or machines

Customizable - Visualize the data that's important to you.

Receive custom notifications on your mobile device based on rules that you define.

- Machine uptime
- Machine sensors out of range
- Machine alarms
- Machine work phase completion
- Lengthy reports
- User transactions
- And more...

Accudraft **LIVETM & Accudraft Identity** - Better together!
Accudraft **LIVE**TM uses the latest standards in web security and is highly optimized for mobile and web access.

