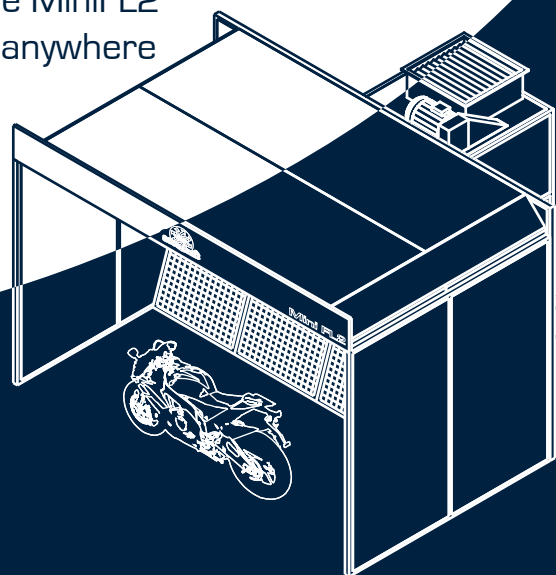


# Mini FL2



## MiniFL2™ CTOF Workstation

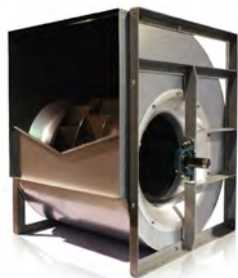
The MiniFL2 is an open face workstation designed for parts and small vehicle prep and finishing. No need to occupy an entire paint booth for a bumper or small parts. The MiniFL2 has a small footprint and can be installed virtually anywhere within a facility.



SAIMA of North America Inc. | Randolph, New Jersey 07869 | (800) 524-0340

info@accudraftpaintbooths.com | www.accudraftpaintbooths.com

# MiniFL2



## Easy Access Lighting



## Standard Controls



## Workspace

### Starting Dimensions

- Interior 14' long x 12' wide x 8' 3" high
- Exterior 16' 6" long x 12' 4 1/4" wide x 9' high

### Available Configurations

- Open Front Rear Wall Exhaust
- Closed w/Doors Semi-Down

### Construction

- Dual Skin 20 Gauge Electrogalvanized Steel Walls
- H-Channel Walls
- Textured Exterior Vinyl Coating
- UltraWhite™ Vinyl Coated Interior

### Main Doors (Optional)

- 2 or 3 Wing Main Entrance Doors
- Dual Skin Insulated Vinyl Coated
- Wire-mesh Reinforced Windows
- Welded Steel Reinforcement Frame

### Service Door (Optional)

- Side Access Door with Window
- 36" wide x 82 1/2" high

### Filtration

- Exhaust Filter
- Paint Arrestor (Over 98% Removal Efficiency)

### Lighting

- 36" Daylight Corrected Light Fixtures
- Inside Access Hinged Glass Doors
- Lab Certified Explosion Proof

### Options

- Length Extensions, Width Extensions, Height Extensions, Drive Through, Raised Floor, Single Phase, Observation Windows, Heated Intake

## Mechanicals

### Exhaust

- 12,000 CFM
- 7.5 HP 3 Phase High Efficiency Motor
- RDH 500 Backward Inclined Turbine
- Non Loading, Non Sparking

### Intake (Optional)

- KD-500
- 7.5 Horsepower / 12,000 CFM
- ADH Belt Driven Forward Curve Blower
- 1,200,000 BTU (Capable)
- Direct Fire Gas or Propane
- Full Recirculation on Bake - 90%
- Includes SmartPad Control Panel

### Standard Controls

- Heavy Duty Pushbutton Control Panel
- Lights Starter
- Motor Starter
- Exhaust VFD Included

### Certification

- ETL Listed



### Warranty

- 1 Year Bumper to Bumper

### Note

- SAIMA of North America reserves the right to modify or change any of the dimensions or features without notification.

